



Dino-Scientist

Hello grown-ups! This is for you to use at the Museum.

Follow the pupils' activity in the Dino-Scientist logbook and use this information to guide them along the way.

Challenge 1



Common name:	<i>Ichthyosaurus</i> (Ich-thi-o-saur-us)
Scientific name:	<i>Temnodontosaurus platydon</i> (Tem-no-don-to-saur-us pla-ti-don)
Its common name means 'fish-lizard' in Ancient Greek.	

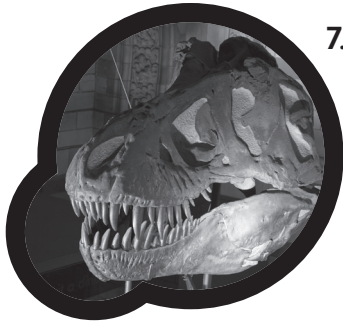
Challenge 3

What I want to find out:	Evidence I can see:	My conclusions:
1. What it ate.	Pointed, sharp teeth, useful for cutting, ripping or catching fish.	It ate other animals that lived in water, such as fish, octopuses and animals with shells, like ammonites
2. How it moved around.	Paddle-shaped limbs, useful for swimming and moving through water.	It moved by propelling itself through water with its paddle-shaped limbs.
3. Where it lived.	Paddle-shaped limbs, useful for swimming and moving through water.	It lived in the ocean, near the surface.

Turn over for the next challenge

CHALLENGE 5

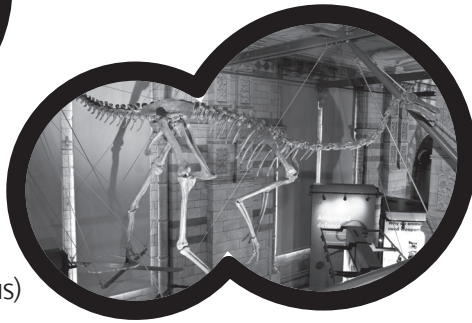
Carnivorous dinosaurs



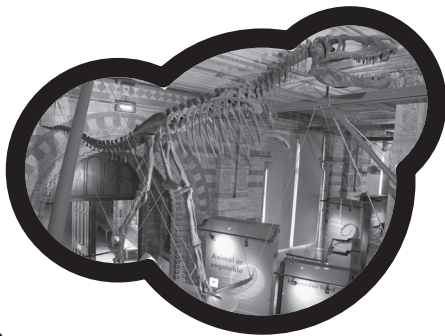
7. *Tyrannosaurus*
(Tie-RAN-oh-saw-russ)



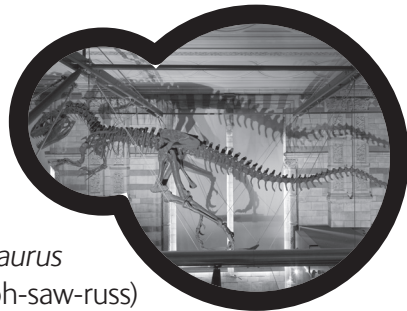
5. *Dromaeosaurus*
(DROM-ee-oh-saw-russ)



4. *Gallimimus*
(gal-lee-MEEM-us)

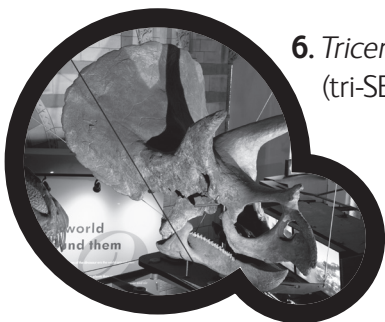


2. *Albertosaurus*
(al-BERT-oh-saw-russ)

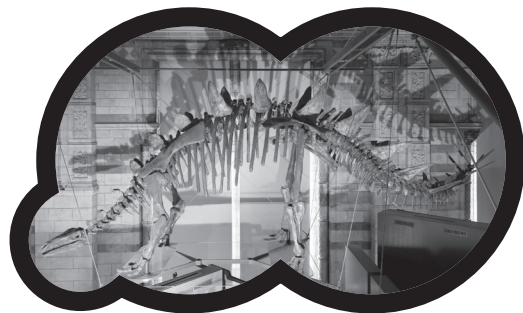


1. *Allosaurus*
(AL-oh-saw-russ)

Herbivorous dinosaurs



6. *Triceratops*
(tri-SERRA-tops)



3. *Tuojiangosaurus*
(too-YANG-oh-sore-us)

CHALLENGE 6

The mystery dinosaur is:

Dromaeosaurus



Please return this to the
School Reception after use.