



# Dino-Scientist

## logbook

This belongs to .....

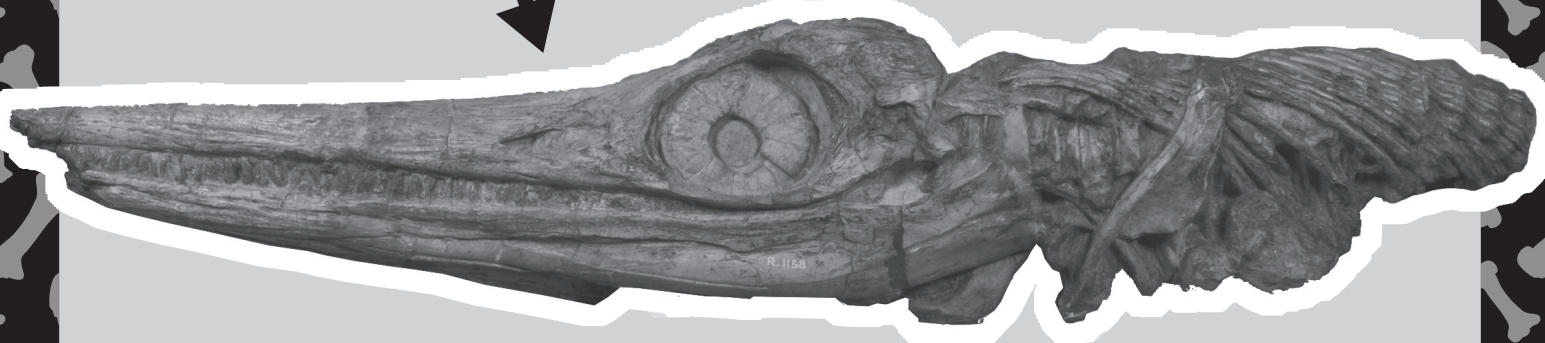


# Dino-Scientist

Hello, I'm Lorna. I'm a scientist at the Natural History Museum.

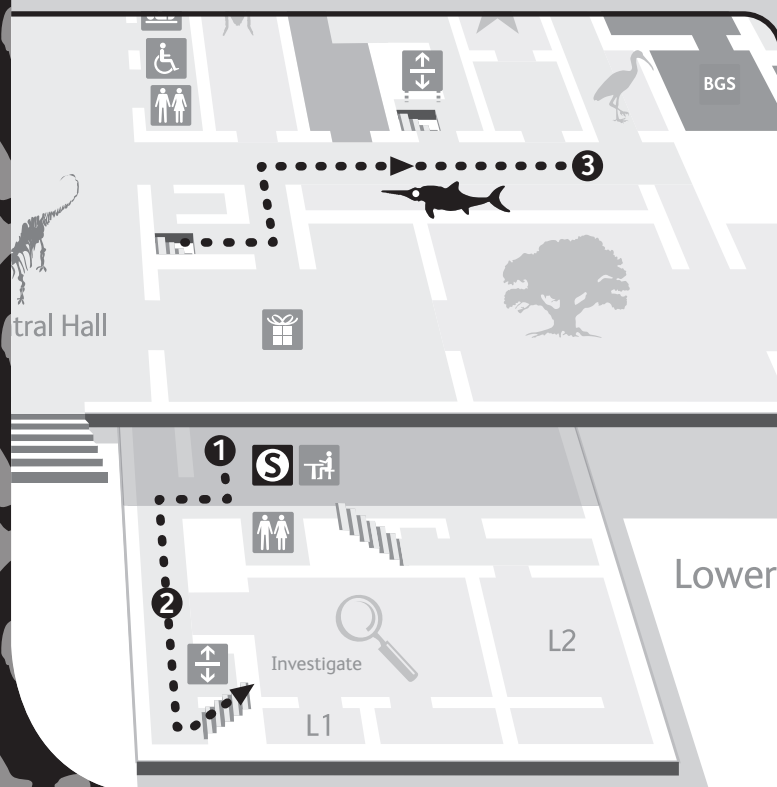
I'm going to challenge you to become a Dino-Scientist for the day.


Start by finding this fossil. It's not a dinosaur, but it lived at the same time as them. What can it be?



## CHALLENGE 1

Follow the directions and make your way to the *Fossil Marine Reptiles* gallery to find this fossil.



1. You are in the School Reception on the Lower Ground Floor of the Green Zone (look out for the **S** icon on the map).
2. Leave the School Reception and head up the stairs.
3. Follow signs to the *Fossil Marine Reptiles* gallery (look out for the  icon on the map).

Write the name of the fossil animal here:

.....

Turn over for the next challenge



Let's take a look at the skeleton and teeth.

## CHALLENGE 2

Practise your skills of observation and draw the fossil's skeleton and teeth below.

Its skeleton looks like this:



Its teeth look like this:



Turn over for the  
next challenge

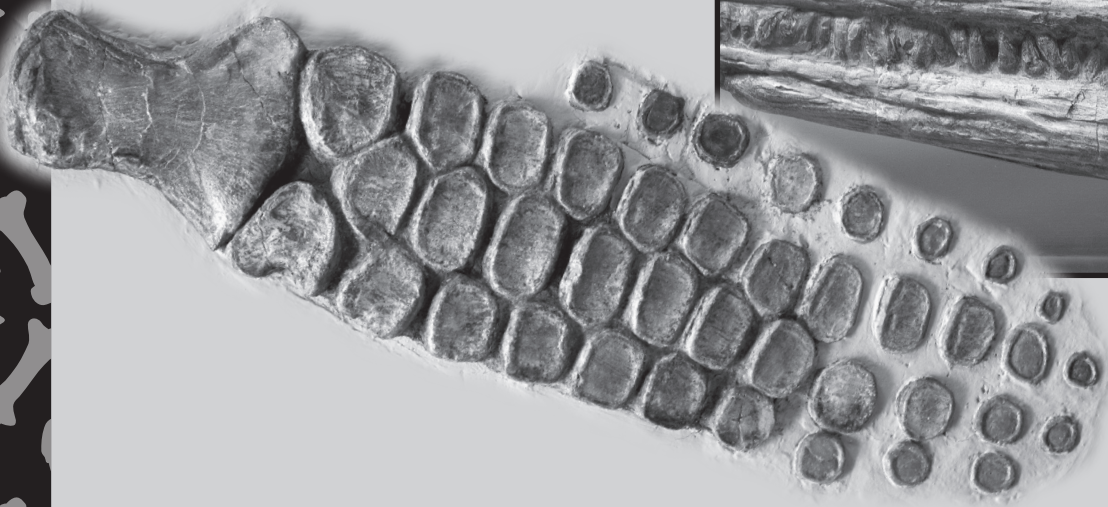


# CHALLENGE 3

Look at the fossil closely. Does the shape of the skeleton or its teeth give you any clues about how it moved, what it ate or where it lived? Write your conclusions in the table below.

Its limbs are shaped a bit like boat paddles. Why would this have been useful?

Just look at those sharp teeth! What do you think it liked for lunch?



What I want to find out:	Evidence I can see:	My conclusions:
1. What it ate.		It ate...
2. How it moved around.		It moved...
3. Where it lived.		It lived...

Turn over for the next challenge




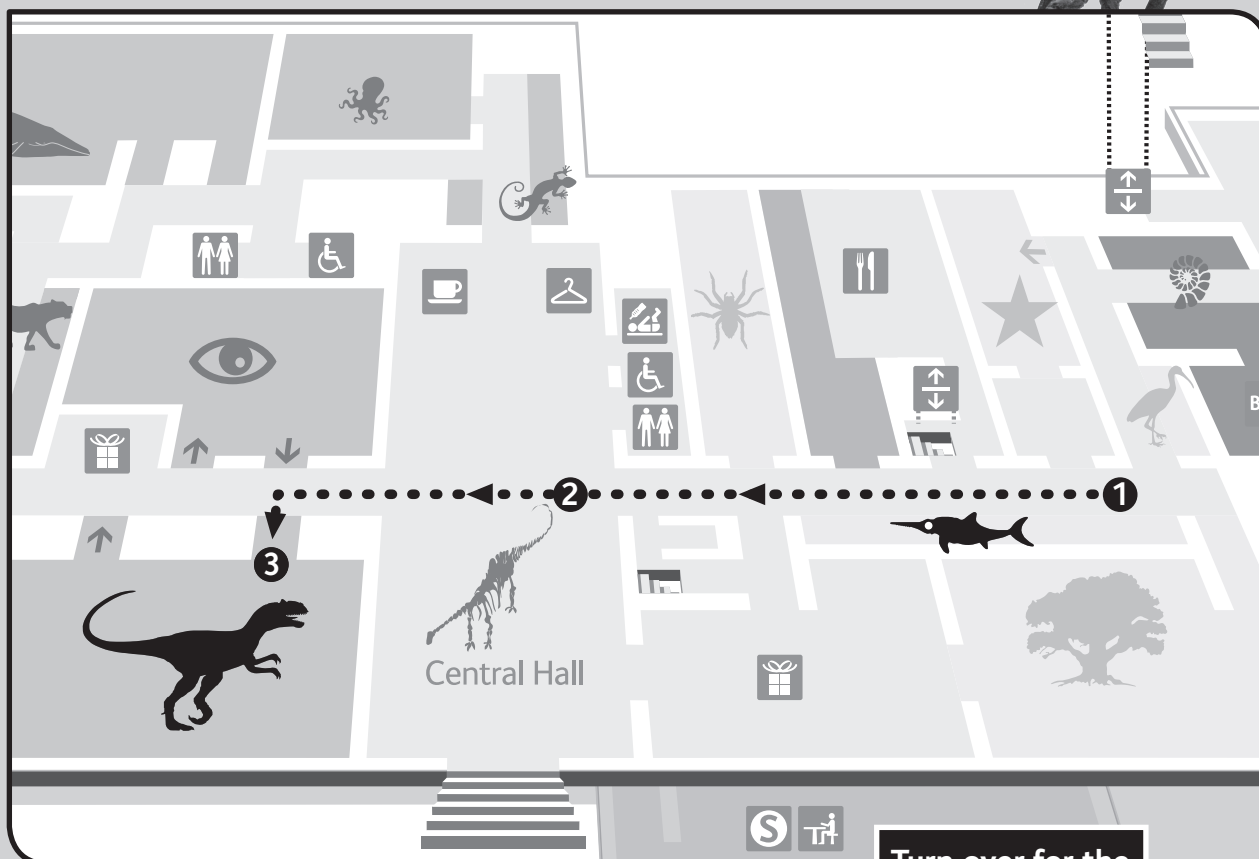
Good effort, now you are ready to study some dinosaur fossils.



## CHALLENGE 4

Follow the directions and make your way to the *Dinosaurs* gallery.

1. You are in the *Fossil Marine Reptiles* gallery on the Ground Floor of the Green Zone.
2. Follow signs to the Central Hall, walk past the *Diplodocus* skeleton and into the Blue Zone.
3. The *Dinosaurs* gallery (look out for the  icon on the map) will be on your left.



Turn over for the next challenge

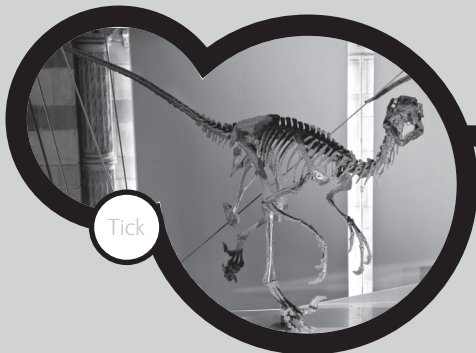


## CHALLENGE 5

Walk upstairs and along the balcony. Starting with *Allosaurus*, look closely at all the dinosaur teeth and tick all of the dinosaurs below that are carnivores (meat-eaters).



The *Dinosaurs* gallery is home to dinosaurs from all over the world.



Tick

5. *Dromaeosaurus*  
(DROM-ee-oh-saw-russ)



Tick

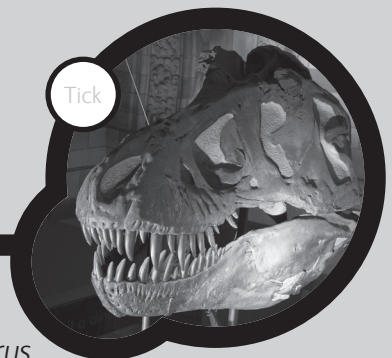
3. *Tuojiangosaurus*  
(too-YANG-oh-sore-us)



Tick

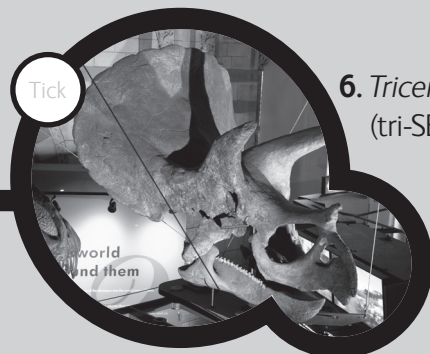
1. *Allosaurus*  
(AL-oh-saw-russ)

YOU ARE  
HERE



Tick

7. *Tyrannosaurus*  
(Tie-RAN-oh-saw-russ)



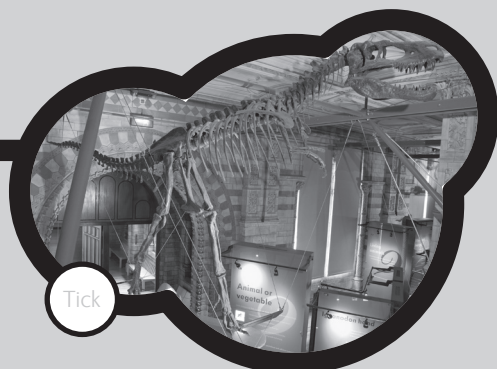
Tick

6. *Triceratops*  
(tri-SERRA-tops)



Tick

4. *Gallimimus* (gal-lee-MEEM-us)



Tick

2. *Albertosaurus* (al-BERT-oh-saw-russ)

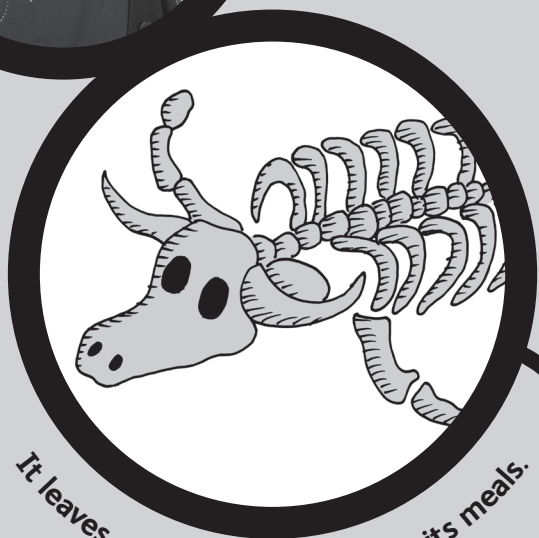
Turn over for the  
next challenge



Now it's your chance to solve a mystery...

## CHALLENGE 6

Stay on the balcony and use the four clues below to work out what this mystery dinosaur is. Write its name below.



It leaves an animal carcass after its meals.



It's less than one metre tall.

The mystery dinosaur is:

.....



It has two toes and a claw on each foot.



It has coin-sized claws.



Well done! You have completed the Dino-Scientist challenges.

Why not come back with your friends and family and wow them with what you've learned?



## Take it further...

Discover more about dinosaurs through interactive games at [www.nhm.ac.uk/kids-only/dinosaurs/index.html](http://www.nhm.ac.uk/kids-only/dinosaurs/index.html)

Find out more about what scientists do here at the Museum at [www.nhm.ac.uk/kids-only/ologist](http://www.nhm.ac.uk/kids-only/ologist)

**NATURAL HISTORY MUSEUM**

Research and curation • Business centre • About us • Search [Google Custom]

Home | Visit us | Nature online | NaturePlus | Kids only | Education | Support us | Buy online | Tring

You are here: Home > Kids only > Dinosaurs

**Fun'n'games**

- Things to make and do
- Dinosaurs
- Dino Directory
- Dinosaurs in 3D
- Examine Oviraptor
- Finding Baryonyx
- What dinosaur are you?
- Dinosaur defender
- Gone fishing
- Dino quiz
- Earth and space
- Life...
- Naturecams
- I want to be an 'ologist
- At the Museum
- Picture gallery
- Join us

**Dinosaurs**

The first dinosaurs appeared about 230 million years ago and for the next 160 million years the Earth belonged to these ancient reptiles. Discover how these gentle plodding giants and fierce, bloodthirsty hunters lived, ate, and if they really died out 65 million years ago.

**Dino Directory**

Discover facts about hundreds of dinosaurs, where and when they lived and what they looked like.

Explore the directory >>>

**Dinosaurs in 3D**

Examine dinosaurs from every angle in these great 3D images.

Explore 3D dino >>>

**Examine Oviraptor**

Learn more about the mysterious Oviraptor. Was it a deadly predator or a harmless plant-eater?

Find out here >>>

**Finding Baryonyx**

Baryonyx's skeleton took years to unearth. But you can take a quicker tour of its bones here.

Investigate Baryonyx >>>

**What dinosaur are you?**

If you were a dinosaur, would you be friendly or vicious, meat-eating or veggie-loving?

Take the quiz >>>

**Dinosaur defender**

Use your heavy clubbed tail to defend your babies from vicious raptors in this game.

Fight to the death >>>

**Gone fishing**

In this game you use your claw to swipe enough fish to stop yourself starving to death.

Enjoy a fishy feed >>>

**Dino quiz**

Are you a Dino-brainiac? Test yourself with our quiz about what dinosaurs ate.

What do you know? >>>

**Did you know?**

More than 20 different types of dinosaur used to live in Britain.

**Related information**

- Star attractions
- Dinosaur and fossil scrapbook
- Dinosaurs and other extinct creatures
- Dinosaur gallery
- Fantastic fossils
- Fossil hunting guide
- External links
- BBC Prehistoric life
- Show Me - Dinosaur games and fun
- BBC Planet Dinosaur game

**Toolbox**

- Print version
- Email this page

**NATURAL HISTORY MUSEUM**

Research and curation • Business centre • About us • Search [Google Custom]

Home | Visit us | Nature online | NaturePlus | Kids only | Education | Support us | Buy online | Tring

You are here: Home > Kids only > I want to be an 'ologist

**Fun'n'games**

- Things to make and do
- Dinosaurs
- Earth and space
- Life...
- Naturecams
- I want to be an 'ologist
- At the Museum
- Picture gallery
- Join us

**I want to be an 'ologist**

The Museum has hundreds of full-time staff, working hard to keep things running smoothly and doing important scientific research behind the scenes. Find out how our young scientists became interested in the natural world and what their work involves.

**Aquatic zoologist**

James MacLaine helps to look after the fish collections at the Museum, with half a million fishes in it.

Follow in his steps >>>

**Palaeontologist**

Lorna Steel works with the Museum's 9 million fossils, one of the largest collections in the world.

Follow in her steps >>>

**Entomologist**

Zoe Adams studies the Museum's 28 million amazing insects and other terrestrial arthropods.

Follow in her steps >>>

**Mineralogist**

Mike Rumsey chips away at the quarter of a million rocks, gems and other minerals at the Museum.

Follow in his steps >>>

**Zoologist**

Miranda Lowe investigates creatures from the enormous blue whale to the tiniest microbe.

Follow in her steps >>>

**Botanist**

Mark Spencer researches the Museum's collection of preserved plant specimens, some hundreds of years old.

Follow in his steps >>>

Print version