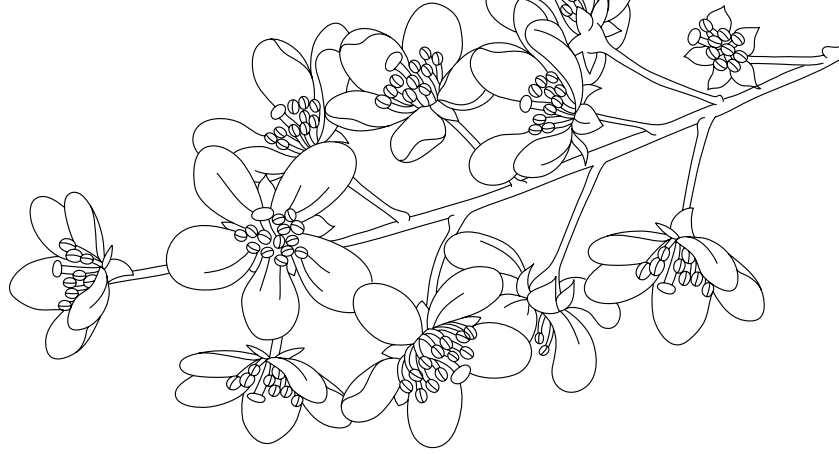




**NATURAL
HISTORY
MUSEUM**

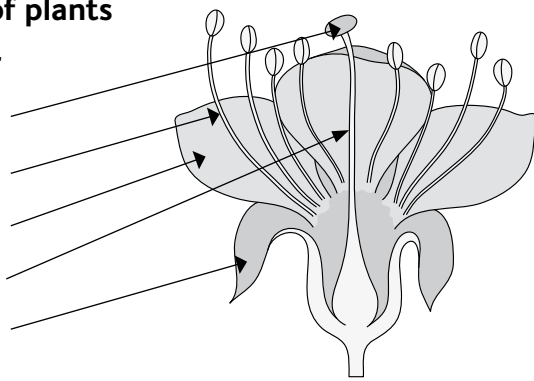


Cherry tree survey: cherry look-alikes

Parts of plants

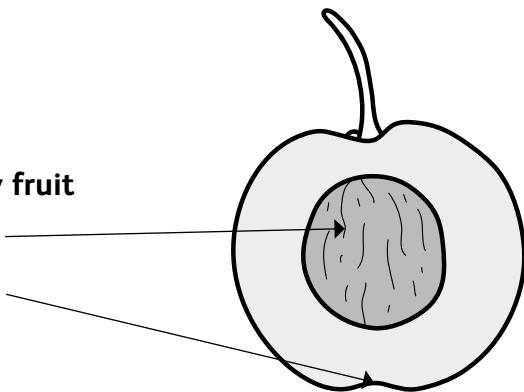
Flower

stigma
stamen
petal
style
sepal



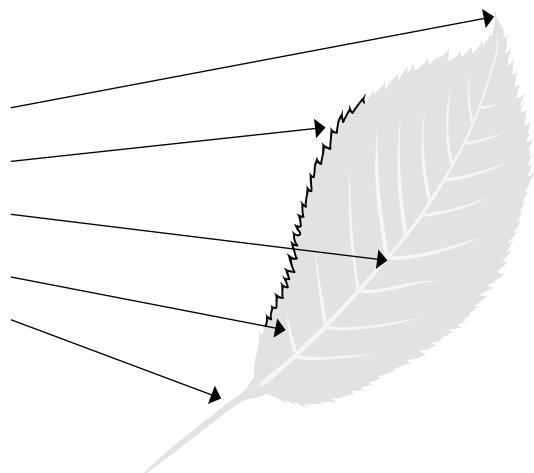
Cherry fruit

seed
apex



Leaf

apex
margin
midrib
vein
stalk



Cherry trees

Cherry trees have the following distinguishing characteristics:

- flowers in simple clusters, branched clusters or spikes
- styles: 1
- seeds: 1
- ripe fruit: less than 2cm long with a smooth apex
- bark with raised horizontal lines or bands of pores (lenticels)

Trees often confused with cherries

Some types a tree are easy to confuse with cherry trees. These details can help you check your identification.

Cherry plum

This tree is the most easily confused with cherries. It is frequently planted, especially the purple-leaved forms.

- flowers: 1-3 in clusters
- style: 1
- fruit: 2.5-3cm long, skin with a greyish waxy bloom

Flowering crab-apples

Some species are difficult to distinguish from cherries, especially when in fruit.

- styles: 4-5
- seeds: several
- ripe fruit: 0.5-3cm long; in some species withered sepals remain at the apex while in others the sepals fall early so the ripe fruit is smooth and cherry-like

Almond

These are closely related to cherries, belonging to the same genus.

- flowers: in pairs
- styles: 1
- seeds: 1
- ripe fruit 3.5-6cm long, flattened and hairy

Mespil

These are sometimes confused with bird cherries.

- flowers: in open spikes
- styles: 5
- seeds: 4-10
- ripe fruit: up to 1cm long, skin with a greyish waxy bloom, sepals remain at the apex

Trees sometimes confused with cherries

These trees are less often confused with cherries.

Apples and pears

- styles: 2-5
- seeds: several
- ripe fruit: more than 2cm long with withered sepals persisting at the apex

Peach

These are closely related to cherries, belonging to the same genus.

- flowers: solitary
- styles: 1
- seeds 1
- ripe fruit: 4-8cm, hairy

Plums and damsons

These are closely related to cherries, belonging to the same genus. They can be thorny.

- flowers: 1-3 in clusters
- style: 1
- seeds: 1
- ripe fruit: 2-8cm long, skin with a greyish waxy bloom

Blackthorn

These are closely related to cherries, belonging to the same genus.

- twigs: thorny
- flowers: single or in pairs
- style: 1
- seeds: 1
- ripe fruit: roughly 1.2cm long, skin with a greyish waxy bloom

